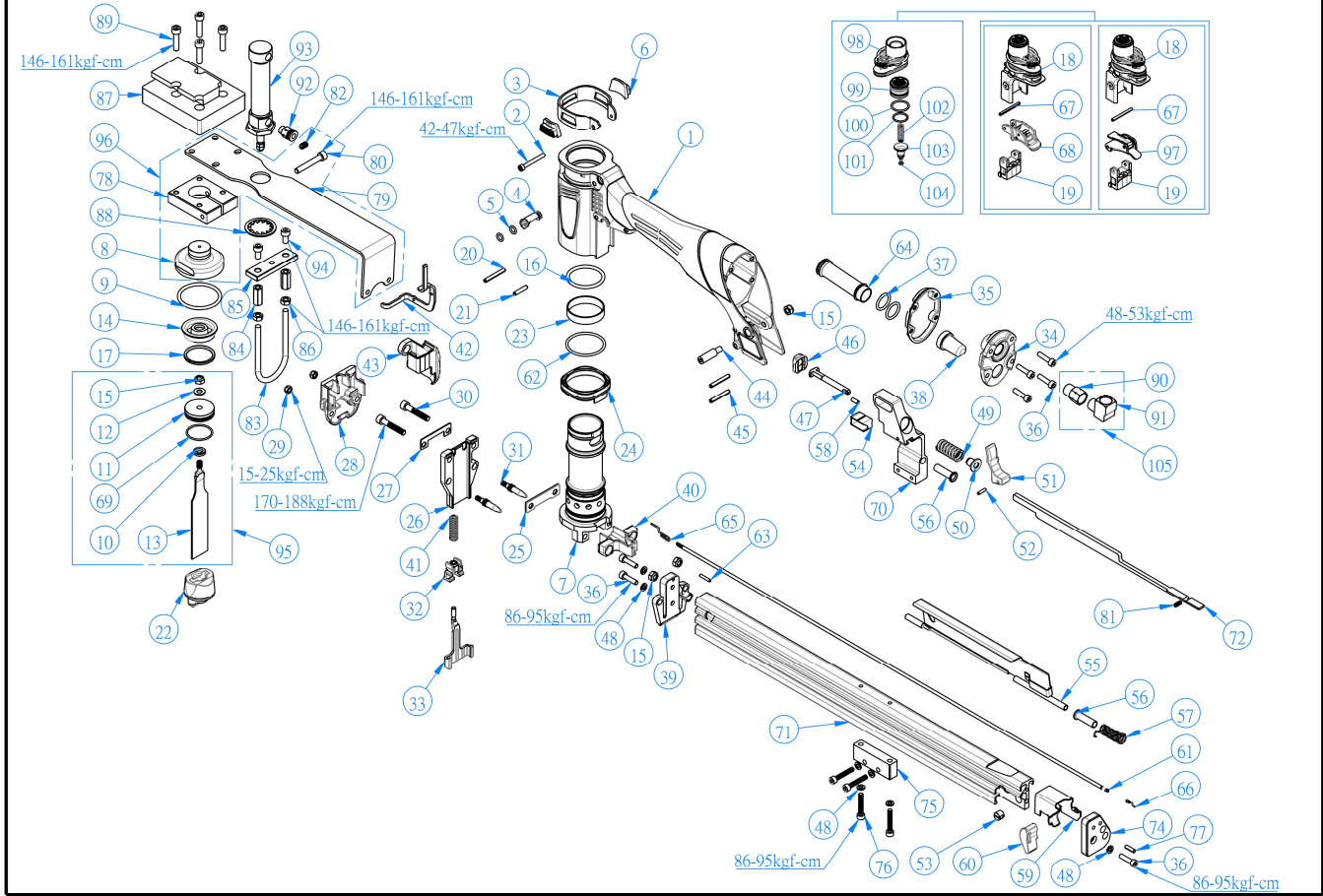


PARTS LIST / SCHEMATICS, MODEL NUMBER : SN412S2LM

NOTE : When ordering spare parts.Please state the part name and part number. ★ :Suggested wearing parts.



SN412S2LM.A01 B 2026-01-05

Item	★	Part NO.	Description	Q'ty	Item	★	Part NO.	Description	Q'ty	Item	★	Part NO.	Description	Q'ty
1		104158	Frame	1	36		100530	Screw Socket Hd	7	71		109279	Assembly, Magazine	1
2		104106	Screw, SHCS	1	37	★	104169	O-Ring	2	72		109175	Top Guide	1
3		104129	Protector, Rear Frame	1	38		104139	Exhaust Detector	1	74		109176	End Cover	1
4		104108	Valve, Energy Control	1	39		104166	Tip, Core	1	75		109178	Bracket, Magazine Bracket	1
5	★	100332	O-Ring	2	40		104163	Casting, Top Guide	1	76		100568	Screw Socket Hd	4
6		104230	Wear Guide	2	41		104148	Spring, Compression	1	77		104209	Pin Spring	1
7		104125	Sleeve, Cylinder	1	42		104133	Arm, Upper Contact	1	78		109619	Mounting Block	1
8		109618	Cap	1	43		104128	Cover, Trip	1	79		109620	Mount Brace	1
9	★	101931	O-Ring	1	44		104110	Screw, Special	1	80		100045	Screw Socket Hd	1
10		103357	WASHER, PISTON	1	45		104149	Pin, Spring	2	81		109742	Set Screw	1
11		103356	PISTON	1	46		100980	Disc-Latch Stop	1	82		109714	Set Screw	1
12		104227	WASHER SPECIAL M6	1	47		104119	Latch, Magazine	1	83		109882	U-Bolt	1
13		103355	DRIVER	1	48		100870	Spring Washer	7	84		109883	Hex Coupling Nut	2
14		104122	Bumper, Top	1	49		104121	Spring, Compression	1	85		109884	Joint Plate	1
15		101018	Nut M6	4	50		104117	Bushing, Toggle Pin	1	86		109889	Hex Nut	2
16	★	100029	O-Ring	1	51		100977	Toggle-Magazine	1	87		109846	Mounting Block	1
17		104124	Ring, Piston	1	52		100090	Roll Pin	1	88		109891	Internal Tooth Lock Washer	1
18	★	104112	Assy, Standard Module	1	53		104172	Pin Special(Mag,Nut)	1	89		100015	Screw Socket Hd	4
19		104143	Arm, Guide Assembly	1	54		104120	Sleeve Bracket	1	90		110622	Air Bushing	1
20		104165	Pin, Spring	1	55		109376	Cover, Magazine	1	91		110621	Air Fitting	1
21		100978	Spring Pin	1	56		109915	Bushing, Magazine Cover	2	92		110527	Tube Fitting	1
22	★	104126	Bumper, Lower	1	57		104118	Spring, Cover	1	93		109881	Cylinder	1
23		104115	Seal, Check	1	58		104162	Pin, Spring	1	94		109888	Hex Socket Screw	2
24		104127	Bulkhead, Sleeve	1	59		105007	Pusher	1	95	★	103358	Main Piston Unit	1
25		104135	Wearplate	1	60		101003	Handle-Pusher	1	96		109769	Mount Kit	(1)
26		104131	Nose	1	61		101834	Spring	1	97		100067	Trigger Unit (C.T)	(1)
27		104137	Plate, Nose	1	62	★	104107	O-Rng	1	98		104228	O-ring	1
28		104134	Casting, Nose Cover	1	63		100066	Roll Pin	1	99		104183	Assembly, Head valve	1
29		100571	Anchor Block Lock Nut	2	64		104114	Tube, Exhaust	1	100		104182	O-Ring	1
30		100208	Screw Socket Hd	2	65		104142	Anchor, Pusher Spring	1	101		104181	O-Ring	1
31		104173	Pin, Nose	2	66		101016	Spring, Link	1	102		104186	Spring, Compression	1
32		101673	Adjuster Trip	1	67		100220	ROLL PIN 3x32	1	103		104187	Seal, Exhaust	1
33		101690	Arm-Lower Contact	1	68		120143	SEQ6 Trigger Unit	1	104		104179	O-ring	1
34		104160	End, Cap	1	69	★	104176	O-Ring	1	105		109942	90 Degree Elbow 1/4" NPT Male to Female Fitting Kits	1
35	★	104138	Gasket, End Cap	1	70		109177	Bracket, Magazine	1					

SN412S2LM.A01B

Ver : SN412S2LM.010B

This tool is available with 2 actuation systems. Each system requires different trigger and / or valve parts as listed hereunder.

Bump Fire actuation: Black Trigger
Sequential actuation: Grey/Silver Trigger

MOQ for items in the following categories is 10pcs, order quantities under 10pcs for these items will be adjusted accordingly.

- (1) Orings – not included in the oring kits (2) Screws, bolts
- (3) Nuts (4) Pins - roll pin, solid pins
- (5) Standard washers – not special washers

About EVERWIN



EVERWIN PNEUMATIC CORP.
No.7, Wugong 7th Road, Wufeng District, Taichung City, 413, Taiwan
www.everwinpneumatic.com